

Our mission statement:

The LSFI is Luxembourg's coordinating entity on sustainable finance, driving change across the whole ecosystem as a Centre of Excellence and Knowledge Hub, supporting the financial sector to accelerate the financing of the transition, and measuring progress

What we do:

The three pillars of our 2030 strategy

1. Building expertise and leadership

The LSFI acts as Luxembourg's expert on sustainable finance topics and regulation. It uses its knowledge to coach the financial institutions, provide insights to the financial sector and policymakers, and raise Luxembourg's profile as a sustainable finance leader worldwide.

2. Unlocking potential and mobilising the private sector

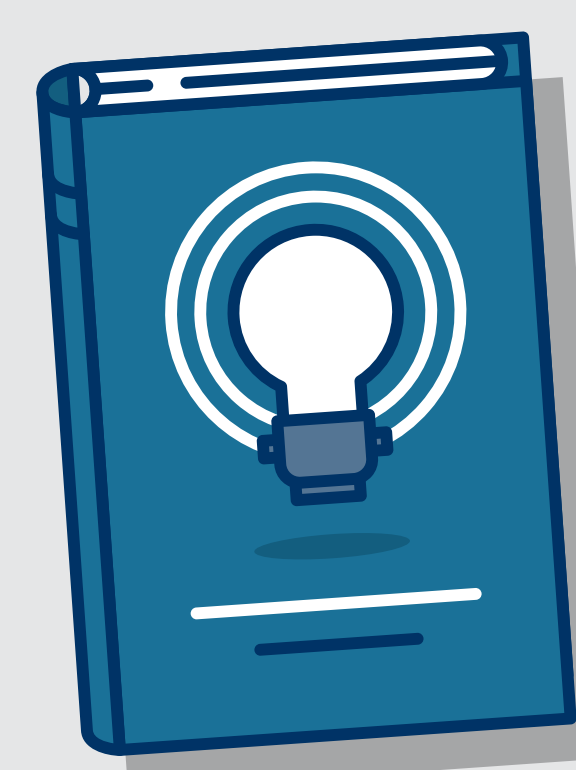
The LSFI unlocks potential in Luxembourg's sustainable finance ecosystem by collaborating with the financial sector on high-impact initiatives, accelerating the transition through innovation.

3. Measuring and communicating progress

The LSFI measures progress of the financial sector towards sustainability and supports the sector with high-quality analysis.

How we do it:

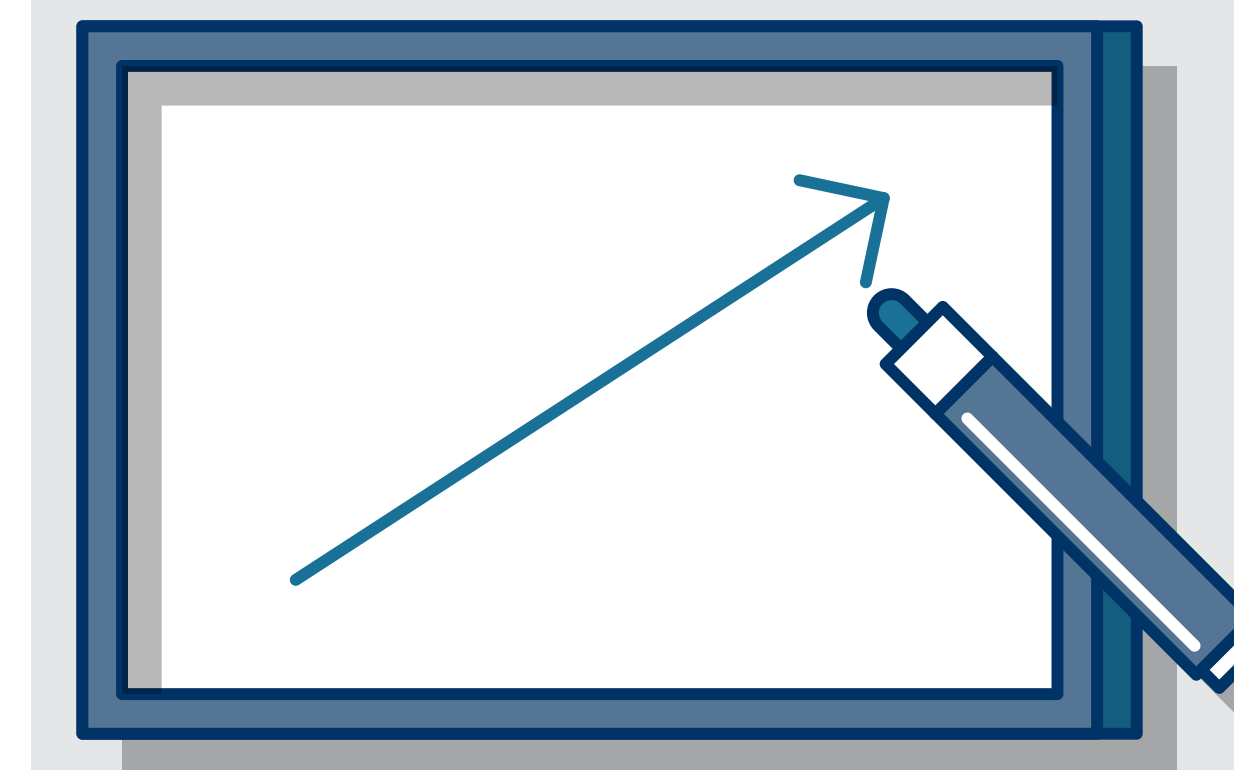
The ten building blocks of our 2030 strategy



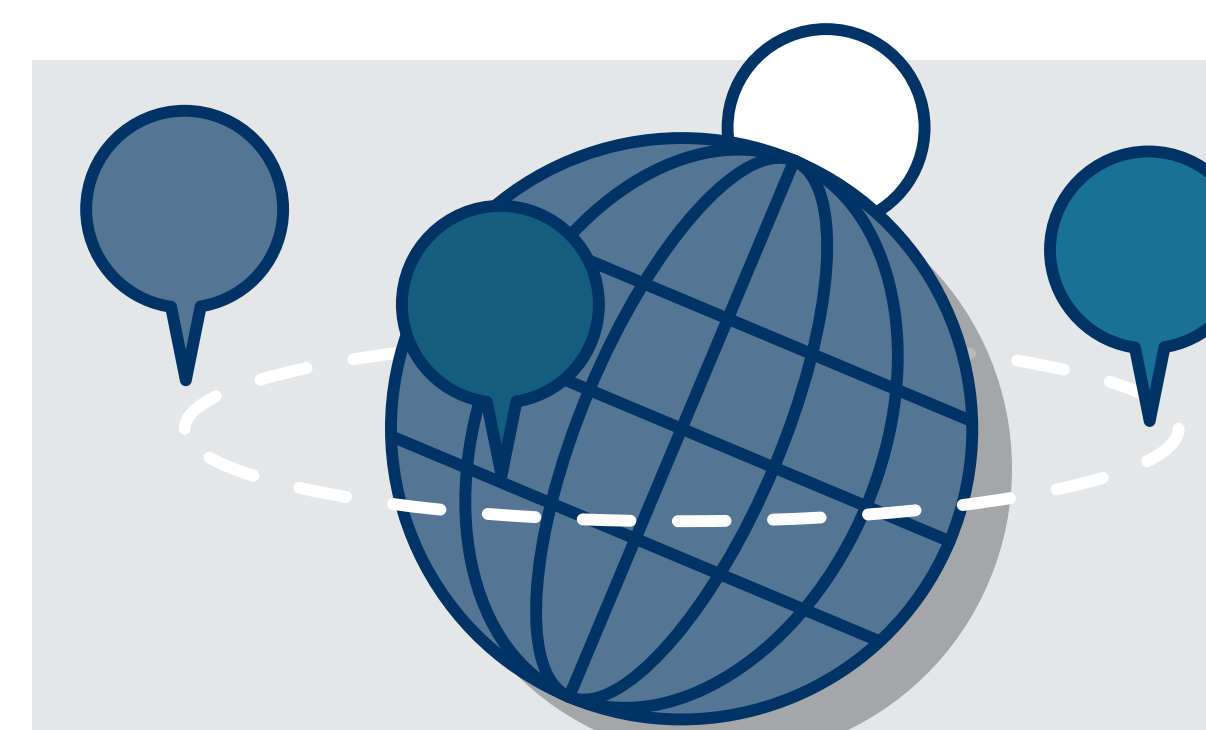
Building understanding



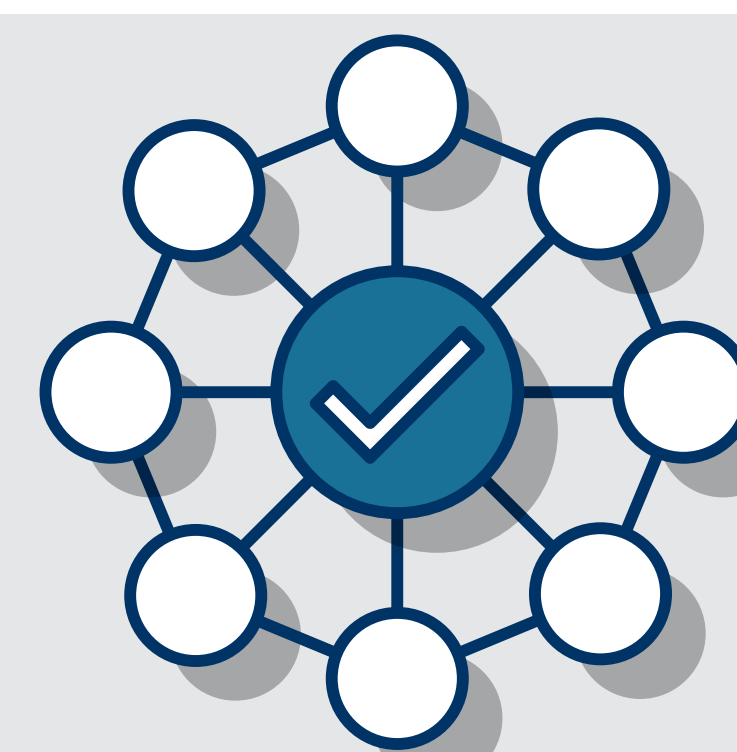
Providing expertise



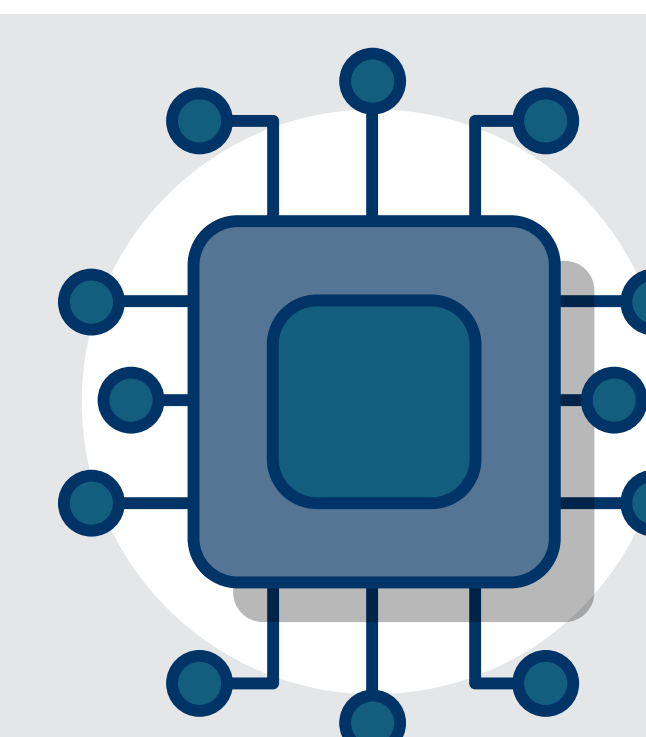
Upskilling & coaching



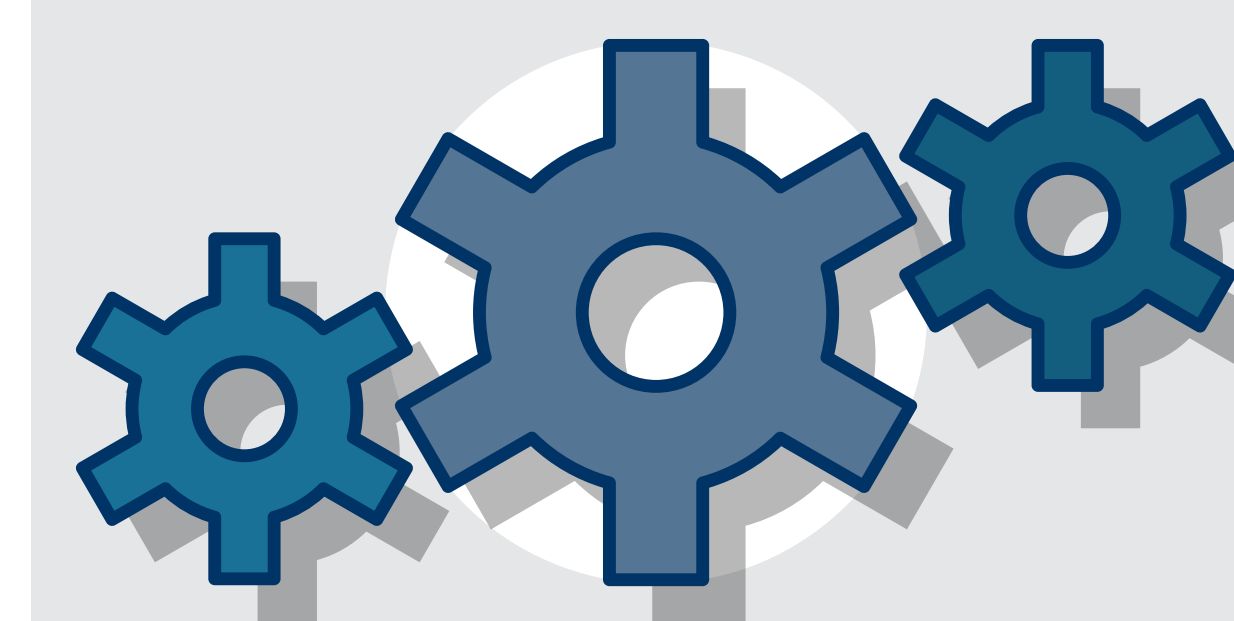
Representing & communicating leadership



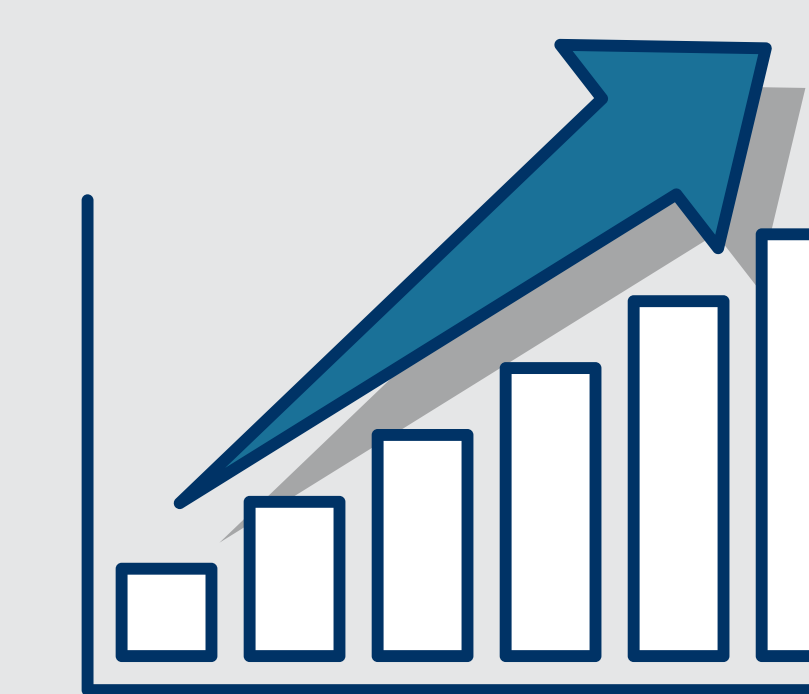
Understanding financial sector needs



Incubating the innovation ecosystem for sustainable finance



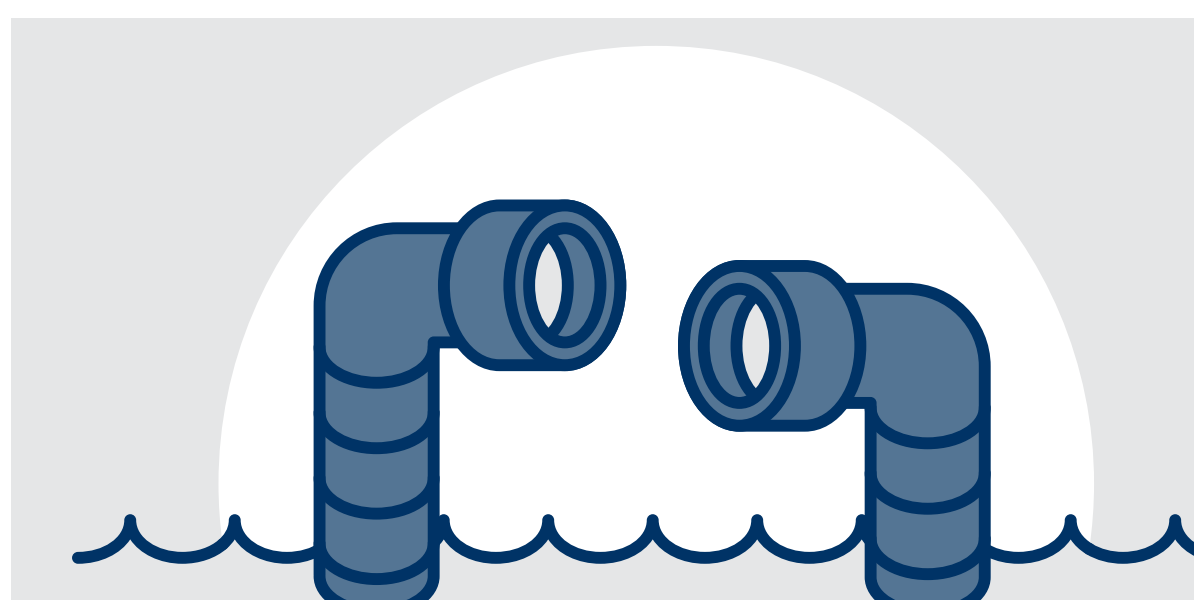
Expanding and leveraging working groups



Scaling impact investing



Leveraging data to measure & communicate progress



Working with financial institutions to explore innovative data solutions



We can only achieve this with strong collaboration in the Financial Sector. If you think we could work together, please get in touch!